

Mesh can be incorporated at this location subject to approval.

15mm Ø galvanised mild steel threaded rod with lock nuts provided at each end. Cut rod 30mm shorter than stone reveal dimension.

25mm thick WBP plywood board cut to same width as nesting box. Length to suit quantity of nesting boxes that are to be specified. Provide 20mmØ locating holes for threaded rods.

Swift cabinet nesting boxes to be screw fixed into WBP plywood board. 3no. nesting boxes illustrated however more or less can be installed.

75x50x5mm thick galvanised mild steel pressure plate with 20mm Ø hole to centre to accept threaded rod.

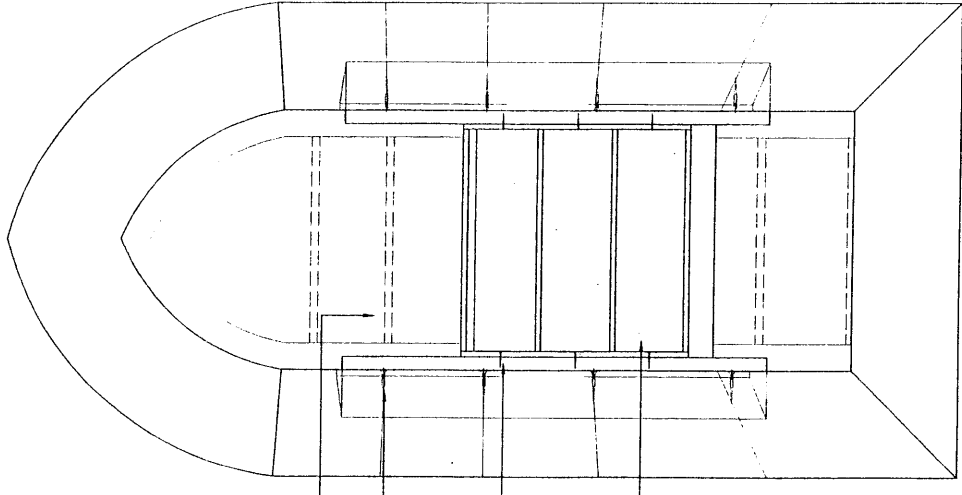
Existing Belfry louvres to remain in situ during installation of swift nesting boxes.

Detail A:
Elevation of Swift Cabinet Nesting Box from within Belfry with Square Reveals

Detail B:
Section through Swift Cabinet Nesting Box with Square Reveals

General Notes:

- Swift nesting cabinet formed in 18mm thick WBP plywood with sides housed and glued providing an access panel to the rear of each nesting box. Screw fix with non ferrous screws into Belfry lining board. Provide code 3 milled lead to lap over top edge of louvre to provide a weathering.
 - The WBP plywood board to the reveal is not to be fixed into the stonework or timber louvre framework unless agreed with the DAC. Support for boxes provided by pressure from lock nuts on the threaded rods.
- However if splayed reveals exist then please refer to Detail no. C for details.
- All external faces of nesting cabinet boxes and board linings etc. are to be primed and painted black.



Note:
Galvanised mild steel threaded rod with lock nuts not required in this detail.

Treated softwood fillet cut to size to provide a square reveal for cabinet of nesting boxes. Fillet to be screw fixed into stone joints and not into stonework reveal.

WBP plywood board to be screw fixed into treated softwood fillet rather than stone reveal.

Swift cabinet nesting boxes to same detail as A and B screw fixed into WBP plywood board.

Detail C:
Perspective Sketch of Swift Cabinet Nesting Box from within Belfry with Splayed Reveals